



Welcome to Wrens

'Whatever you do, work at it with all your heart'



Essential Information
2026/27

Our Nursery

Our Nursery at St. Nicholas Primary School is very much part of the school community and wherever possible, the Wrens are involved in whole school events.

Children's learning in the Nursery is through play, led by the teaching staff, with opportunities to apply knowledge through child-initiated learning. Our fantastic learning environment enables children to be independent and take risks. The outdoor areas have been designed with the needs of the Nursery children in mind, and it enables us to provide learning opportunities that are adapted to a wide range of learning styles.

This booklet is designed to give you some useful information about our Nursery. Hopefully, it will answer some of the questions you may have regarding the activities your child will be involved in, during this important stage of their education.

We have a fabulous team in place in Early Years, bringing a huge variety of backgrounds and a wealth of experience. We trust that we will be able to work together to give your child every opportunity to experience a happy and successful time with us. Starting Nursery is a big step for you and your child. We aim to make it as smooth as possible by providing a stimulating and engaging learning environment that encourages and prepares children for their future education and helps them acquire the skills and enthusiasm needed to embrace the opportunities, responsibilities and experiences of later life.

Yours Sincerely,
Mrs Rooke
Headteacher



Starting Nursery

Starting in a new environment with many new faces can be challenging for little ones. Some children settle in remarkably quickly, whereas others can be a little wary. To make this transition from home life to nursery time as smooth as possible, we believe that it is vital for parents and staff to work together to help your child/ren feel confident and secure from the very start. Every child is different, and parents should not feel worried if their child takes a while to settle in. Parents and carers are asked to share any worries or issues with the staff in Wrens; we believe in good communication between home and nursery to ensure continuity and to give your child the best possible experiences to support their learning and development.

Starting Nursery – For you

The first time you leave your child in the care of another can be more daunting for you than it is for your child. During those first few days, when you and your child are in a new routine, we will provide reassurance and support, answer any questions, and give you feedback at the end of your child's day. It is important to us that both children and parents alike feel comfortable sharing any questions or concerns and have trust in the high level of care that our staff provide for the children.



Where We Play

Burrows is a purpose-built area where both Nursery and Reception is located. The spacious, bright and airy space provides a wonderful atmosphere for the children to play in. Our bathroom facilities are purpose-built for small children with smaller toilets and low sinks. We also have a variety of areas of play, which are centred around our large main room. In addition to this, we have an outside play area with shelter, full use of the school hall, school field, Forest School area and wildlife garden.



Free Flow Play

Free Flow Play has been recognised as an important factor in effective Early Years education. In brief, this is where each individual child is allowed to make free choices about what they want to do next. They can choose whether they play indoors or outdoors, or join in with messy play, role play, or quiet play. They can also choose who to play with. The benefits are that the children learn from their choices and the consequences of their choices. Subsequently, this helps to build relationships and acts as a catalyst for creativity.



At Wrens, we use Free Flow Play as part of a wider timetable of activities. We see first-hand how effective this time can be in bringing out new skills and supporting the development of our children.

Within our purpose-built space, we can give your child the best opportunities to experience high-quality Free Flow Play. Doors open out directly onto our outdoor space where the children can freely move from one environment to another.



Toilet Training

All children are welcomed to our Nursery regardless of whether they are potty trained or not. We understand that all children develop at different stages, and some take longer to learn new skills! Your key person will be here to help and work with you during the potty-training stage and to encourage your child every step of the way.

To help make the toilet training process as easy as possible and support our children in this important stage of their personal development, we have modern bathroom facilities made especially for small children. The toilets and sinks are both low and easy for children to use, and as a result, these facilities give the children the confidence to progress to being independent in the toilet.

Staff

We have a fabulous leadership team in place at St. Nicholas, bringing a huge variety of backgrounds and a wealth of experience.

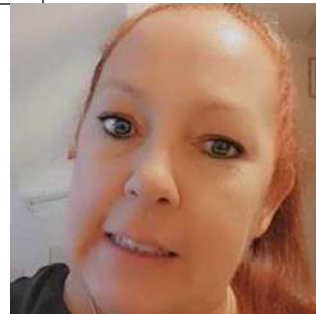
- Headteacher & DSL - Mrs Michelle Rooke
- SENDCo & DSLA - Mrs Anna Merryweather
- Early Years Lead- Miss Marta Dyet

Nursery Team



Mrs Jo Rudzinska

Nursery Lead



Mrs Kerry King

Early Years Practitioner



Mr Euan Mackay

1:1 Support



- What does the current school day look like *?

- **9:00 am** Nursery opens for AM and full-day children. Registration and small group time
- **9:30 am** The children can choose from a wide selection of indoor and outdoor activities in the garden. It may include an adult-led activity that we have planned based on the children's interests and learning needs.
- **10:00 am** Rolling snack- children can access a healthy snack and drink
- **11:20 am** Tidying up time
- **11:30 am** Story time and Singing
- **12:00 pm** Morning session ends, and morning children go home
- **11.45-12:30 am** **Packed Lunch** for 30h children
- **12.00 pm** Nursery opens for the PM children
- **1:00 pm** Registration and small group time
- **1:15 pm** The children can choose from a wide selection of indoor and outdoor activities in the garden. It may include an adult-led activity that we have planned based on the children's interests and learning needs.
- **2:30 pm** Tidying up time
- **2:45 pm** Milk Time
- **2:55 pm** Story time and Singing
- **3:00 pm** End of the school day

* Please be aware that according to Government rules, the 3-4 old are entitled to 15h or 30h founding per week/ (38 weeks per year), which means we would need to review our opening hours soon to be in line with the current legislations.

- Dropping-off and Collecting Children
- At St. Nicholas, we hope to build up a close relationship between home and school and we are committed to forming positive links with all parents and carers.
- We would kindly ask that parents speak to staff about any issues or concerns at the end of their child's Nursery session to avoid a late start to activities. Our staff are always happy to help and are ready to listen. If for any reason parents find that they will be delayed, or if another person will be collecting your child, it would be helpful if we are informed as soon as possible. You can do this by phoning the school at 01235 763858. Alternatively, you can email officesn@snc.cambrianlt.org. For safeguarding reasons, we ask that if somebody is collecting and they have not done so before, they bring a form of ID. We also ask that parents drop off their child at the nursery door, where they will be greeted by a member of staff. When collecting children at the end of the day, parents are asked to wait outside the nursery door.
- Punctuality is expected but it is better to arrive late than miss the session. Late arrivals will need to ring the doorbell at the main school gate.
- **Safeguarding**
- **Safeguarding is always at the forefront of our minds. Our setting has a range of features that help us to keep your children safe. Doors, fences, gates, locks, electrical installations etc.**

Uniform for Nursery

Uniforms are non-mandatory in Nursery, but we know from experience that is easier to manage and easier to clean them. The children can wear white or navy polo t-shirts and school sweatshirts with logos with your own choice of leg wear. If you would like your child to wear the full school uniform, they may do so.

All items with a **school logo** need to be ordered from www.pmgschoolwear.co.uk or bought second-hand from our brilliant PTA team, Friends of St Nics.

All other plain items can be purchased from Asda, Sainsbury's, Tesco, H&M, M&S and other outlets.

Essential items- please label them all!

- Velcro shoes/ trainers,
- Named wellies for daily outside play (to be kept at the Nursery),
- Set of spare clothes (including underwear and socks),
- Sunhats in Summer and warm, waterproof coats in Autumn and Winter.
- **Optional items**
- Your own choice of leg wear **or**;
- Grey trousers, skirts, shorts or pinafore dresses. Shorts can be school shorts. Skirts must be of a suitable length (i.e., knee length)
- Blue and white check dresses for the summer months.



Learn

The aim of the Wrens is to ...

Love



Flourish

